

Glucertain™

Blood Glucose Monitoring System

Quick Start Guide



No Code



Glucose
Dehydrogenase
Technology



5 Sec. Result

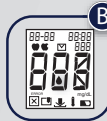
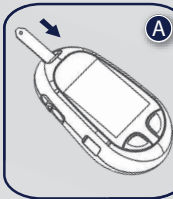


Mini 0.6ul Sample

Glucertain™ Blood Glucose System Quick Start Guide

1

Insert Glucertain Test Strip into Meter (see picture A). The Meter turns on automatically, and the backlight briefly illuminates all the display elements (B). Then blank screen with date & time and flashing apple appears, indicating the “before meal” setting (C). Use the left button to adjust to “after meal” or CS (control solution) if necessary, and confirm the setting by pressing the right button. Once you confirm the setting, a flashing droplet appears in the middle of the screen (D), indicating that the Meter is ready for a test.



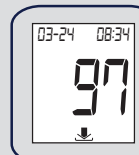
2

Obtain blood sample and apply to Glucertain Test Strip. Use Glucertain Safety Lancing Device (A) to obtain a small droplet of blood (only 0.6 microliter needed). Touch the tip of the Test Strip (holding the Meter) to the droplet (B). Capillary action will pull the sample into the Strip (C), and when enough blood is detected the Meter beeps and the test begins (D).



3

Read the result. The Meter counts down from 5 seconds and displays the result. If error code or inappropriate result is obtained, consult the User's Manual.



4

Discard the Test Strip and the Lancing Device into an appropriate sharps or biohazard container. Hold the Meter over the container and slide the ejection button to eject the Strip. The Meter shuts off automatically once the Strip is removed.

